



38 Moorcroft Road, Fulwood, Sheffield, S10 4GS

Saxton Mee

38 Moorcroft Road

Fulwood

Asking Price

£520,000

Situated in a very sought after location, on a lovely level plot, a tastefully extended, spacious immaculate three bedroom detached bungalow in the very sought after suburb of Fulwood, close to public transport, excellent amenities and with a lovely well maintained easily manageable garden.

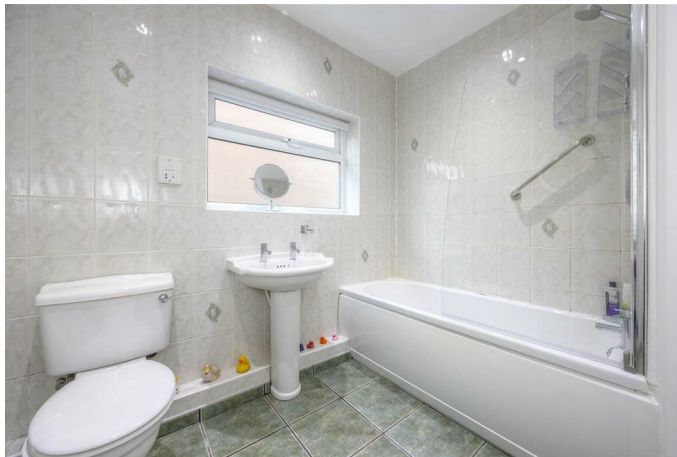
The accommodation which has been improved and very well maintained is offered for sale with immediate vacant possession and no chain. Entrance porch, large entrance hall with an inner hall area and access to loft with potential for conversion, sitting room with feature fireplace opening through to dining area, large master double bedroom with range of wardrobes, two further double bedrooms, bathroom with shower over, breakfast kitchen with range of built-in appliances, utility room. Outside: block paved double width driveway and attractive front garden. To the rear an easterly facing sunny attractive garden with entertaining terrace and landscaped for easy maintenance.

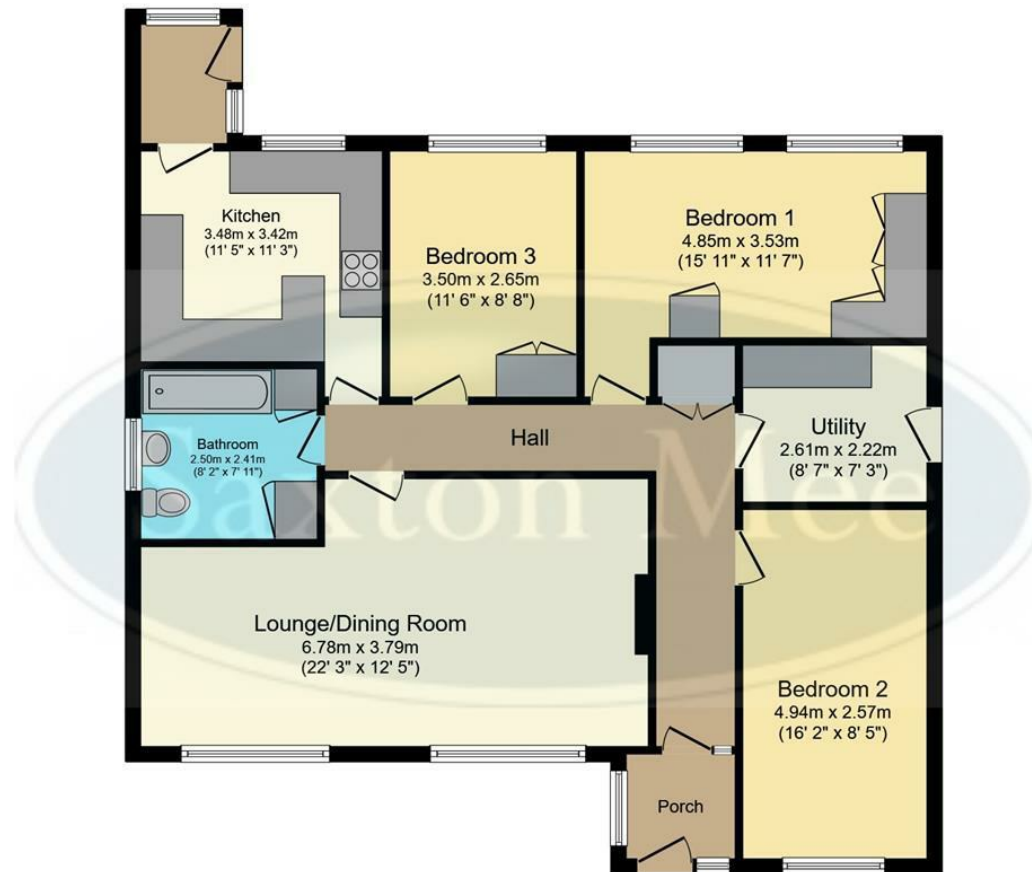
Fulwood has great amenities including shops, good public transport and on the edge of the beautiful open countryside of the Mayfield Valley.



- Three Double Bedroom Extended Detached Bungalow
- Lovely Level Plot with Attractive Landscaped Easily Maintainable Gardens
- Large Open Plan Living Room with Dining Area to One End
- Breakfast Kitchen with Range of Built-in Appliances
- Immediate Vacant Possession and No Chain
- Level Access and Double Width Block Paved Driveway
- Well Placed for the Amenities of Fulwood
- On the Edge of the Beautiful Open Countryside of Mayfield Valley
- EPC Rating TBC
- Viewing: Banner Cross Office







Floor Plan

Floor area 102.6 m² (1,104 sq.ft.)

TOTAL: 102.6 m² (1,104 sq.ft.)

This floor plan is for illustrative purposes only. It is not drawn to scale. Any measurements, floor areas (including any total floor area), openings and orientations are approximate. No details are guaranteed, they cannot be relied upon for any purpose and do not form any part of any agreement. No liability is taken for any error, omission or misstatement. A party must rely upon its own inspection(s). Powered by www.Propertybox.io

While we endeavour to make our sales particulars fair, accurate and reliable, they are only a general guide to the property and, accordingly, if there is any point, which is of particular importance to you, please contact the relevant office. The Agents have not tested any apparatus, equipment, fittings or services and so cannot verify they are in working order. The buyer is advised to obtain verification. Please note all the measurement details are approximate and should not be relied upon as exact. All plans, floor plans and maps are for guidance purposes only and are not to scale. Under no circumstances should they be relied upon as exact or for use in planning carpets and other such fixtures, fittings or furnishings. YOUR HOME IS AT RISK IF YOU DO NOT KEEP UP REPAYMENTS ON A MORTGAGE OR OTHER LOAN SECURED ON IT. 'A Life Assurance policy may be requested.' 'Written Quotations of credit terms available on request.'

Banner Cross
T: 0114 268 3241
E: bannercross@saxtonmee.co.uk
www.saxtonmee.co.uk

Hathersage
T: 01433 650009
E: hathersage@saxtonmee.co.uk

Bakewell
T: 01629 815307
E: bakewell@saxtonmee.co.uk

Matlock
T: 01629 828250
E: matlock@saxtonmee.co.uk

